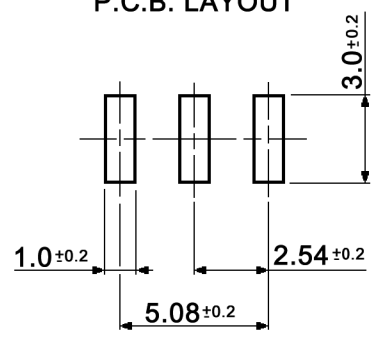


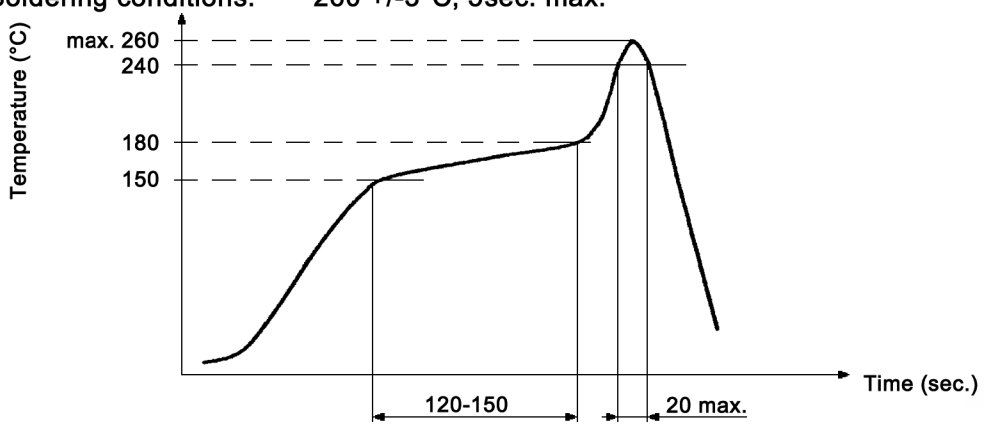
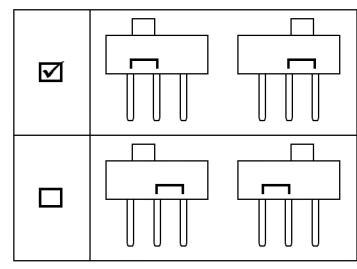
P.C.B. LAYOUT



Specifications:

- Contact rating: 0.2A, 24V; 0.5A, 12V
- Contact resistance: 50mOhm max.
- Insulation resistance: 10 000MOhm min. at 500V DC
- Dielectric strength: 500V AC for 1 minute (2mA)
- Operating temperature: -40°C to +105°C
- Storage temperature: -40°C to +105°C
- Mechanical life: 5 000 cycles
- Operating force: 800gf max.
- Packing: 53 pcs. / tube
- Soldering conditions: 260 +/-3°C, 5sec. max.

CONFIGURATION



Compliance: RohS III (2015/863/EU)

Tolerances: 0 - 1: ±0.1mm 1 - 4: ±0.3mm 4 - 16: ±0.5mm		Date	Name	<h1>MMS 1010 D-R</h1>
		01/03	us	
Circuit	07/22	dr		<h2>30 03 42</h2>
Temperatures	06/16	dr		
Operating temperature	01/13	dr	knitter-switch	
Revised	02/12	dr		
Modifications	Date	Name		Page 1/2

Material:

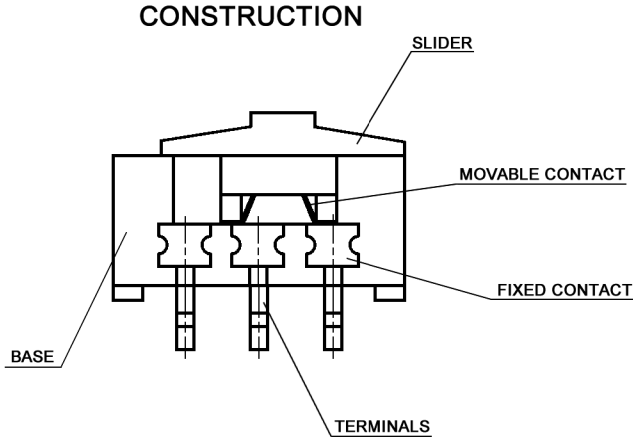
Case: PA9T glass reinforced nylon, black

Slider: PA46 glass reinforced nylon, ivory

Terminals: brass, 0.075µm gold plated over 1µm nickel

Fixed contact: brass, 0.075µm gold plated over 1µm nickel

Movable contact: phosphor bronze, 0.125µm gold plated over 1µm nickel



Compliance: RohS III (2015/863/EU)

Tolerances: 0 - 1: ±0.1mm 1 - 4: ±0.3mm 4 - 16: ±0.5mm	Date	Name	<h1>MMS 1010 D-R</h1>		
		01/03		us	
Circuit	07/22	dr	<h2>30 03 42</h2>	Page	
Temperatures	06/16	dr		2/2	
Operating temperature	01/13	dr			
Revised	02/12	dr	knitter-switch		
Modifications	Date	Name			